

Technical Advice Note (TAN) 15 provides technical guidance which supplements the policy set out in Planning Policy Wales in relation to development and flooding.

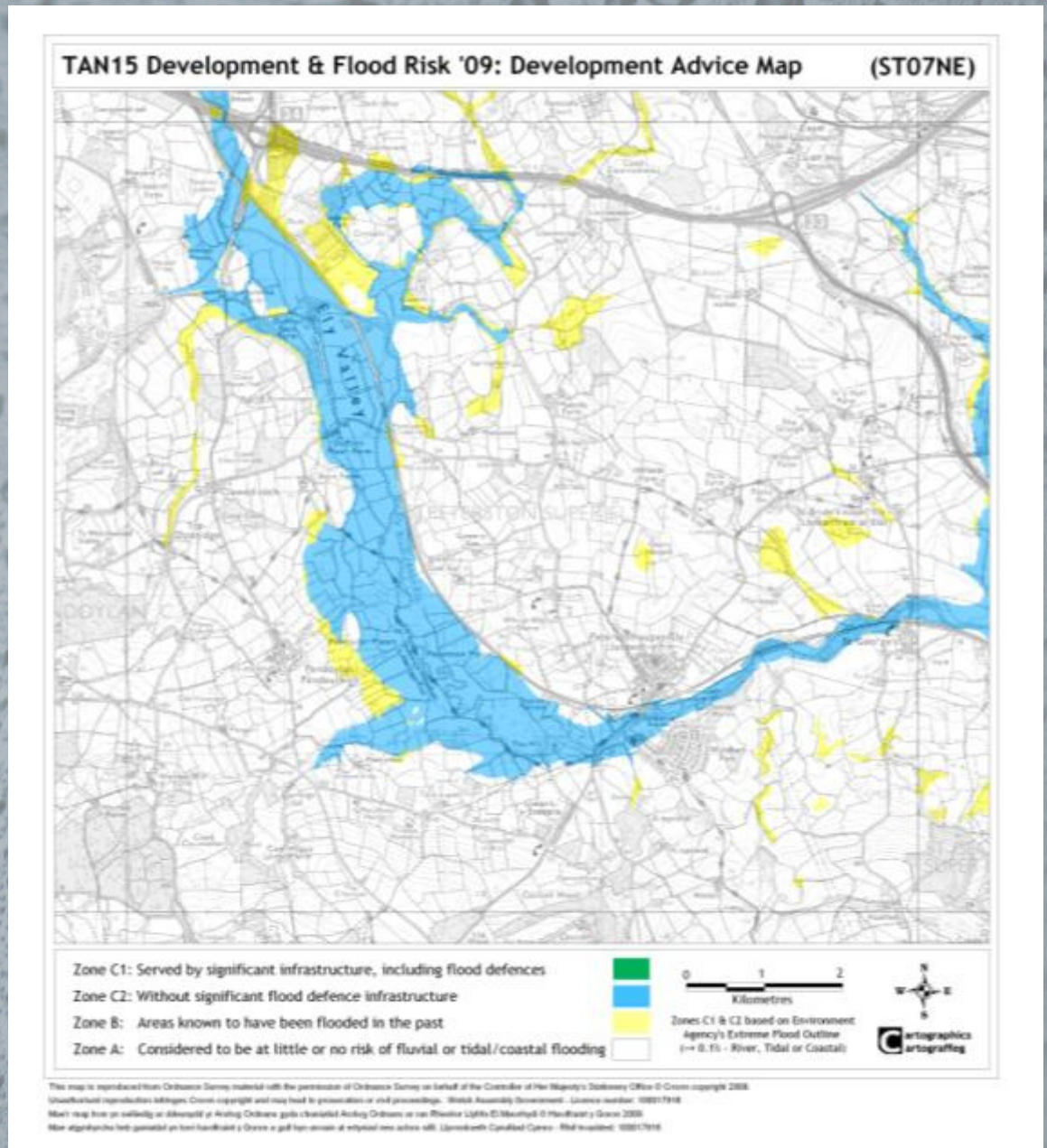
Advice on:

- Nature of development or land use;
- Justifying the location of built development;
- **Development advice maps**;
- Assessing flooding consequences;
- Surface water run-off from new development;
- Action through Development Plans;
- Development Control.



Government of
Western Australia

Previously, images of the development advice map were supplied to individuals by OSGB grid tile for an address as appropriate. These could be as a paper copy, and/or in digital image format.



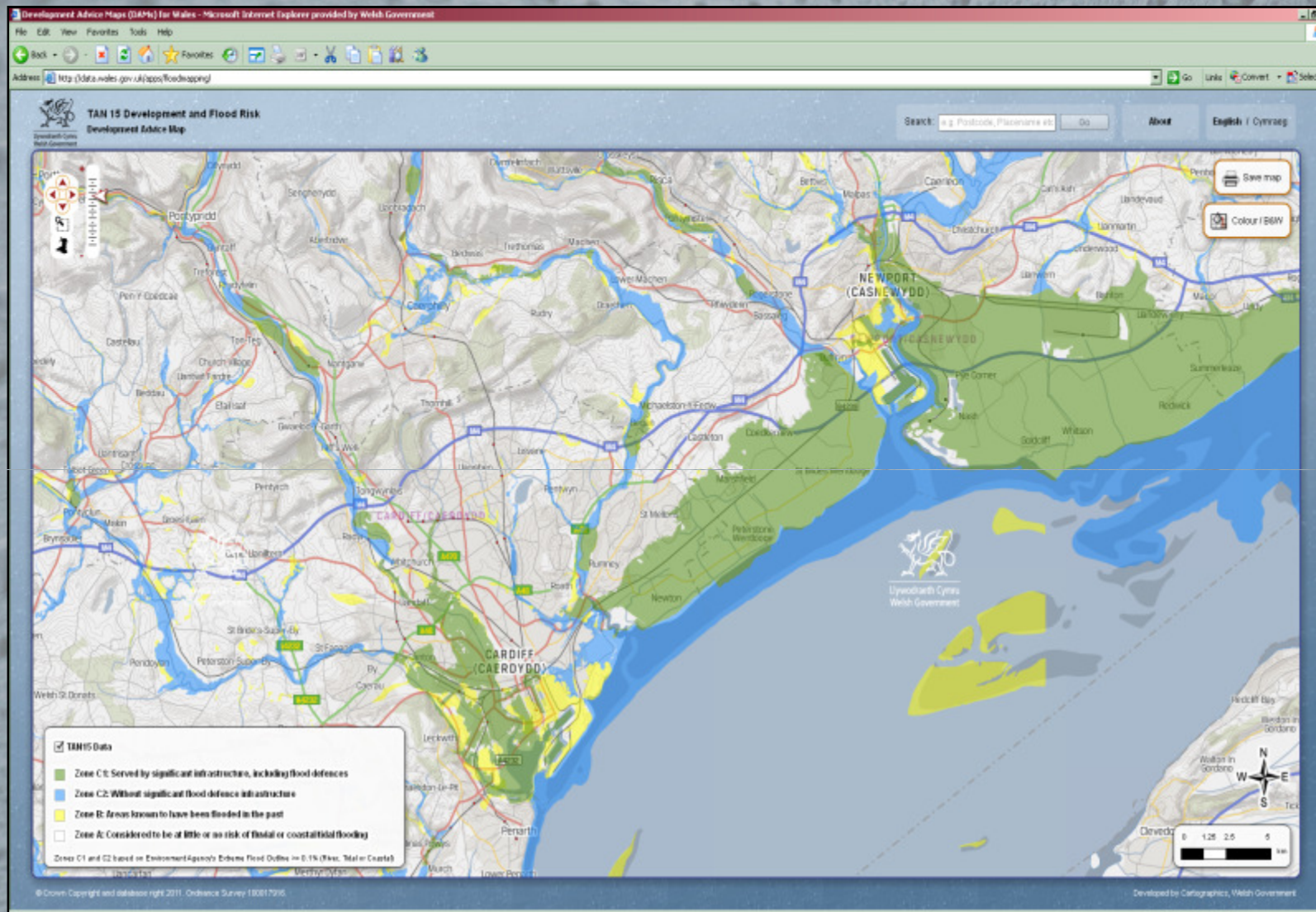
Geography & Technology Division of the Welsh Government developed an interactive web map service.

Data is consumed from 2 sources:

- viaEuropa for PSMA hosted map service
- INSPIRE view service



Interactive Development Advice Map:



<http://data.wales.gov.uk/apps/floodmapping/>