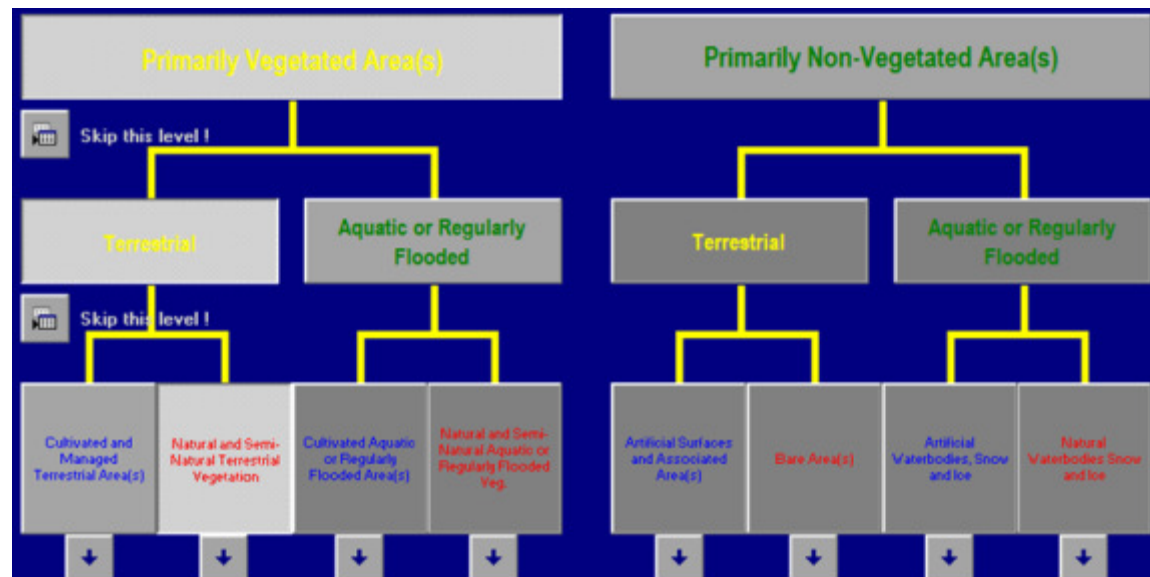
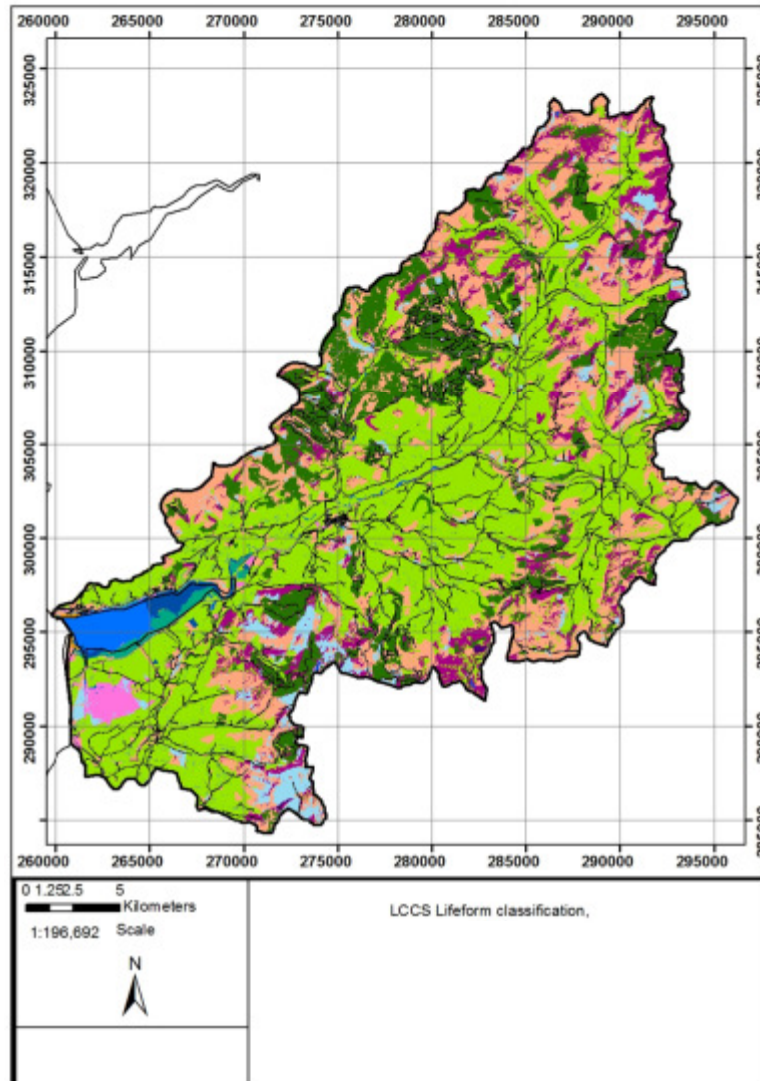


# Method – Classification System

- UN FAO Land Cover Classification System
- 23 classes
  - A11 = 3 classes
  - A12 = 8 classes
  - A24 = 2 classes
  - B15 = 3 classes
  - B16 = 1 class
  - B27 = 3 classes
  - B28 = 3 classes



# Results – Classifications



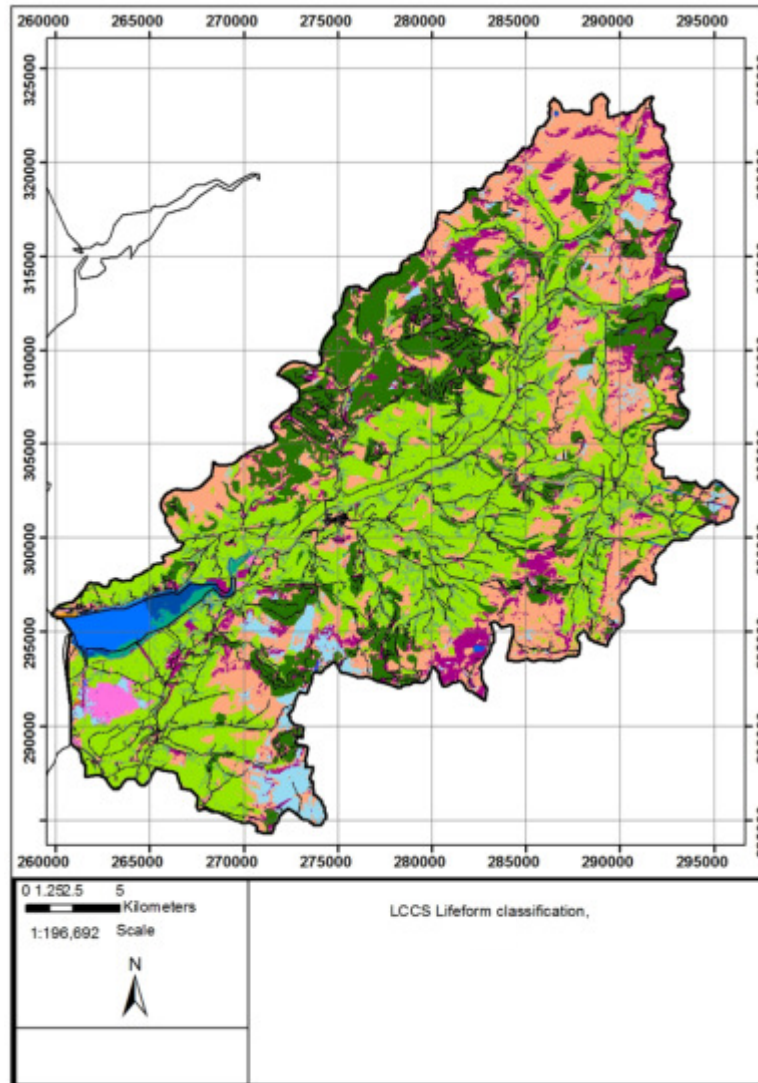
- Overall Accuracy 70%

**Legend**

**LCCS Lifeform Classification**

Class_name	Color
A11 A1 D1 D5 C1 D1 D9 A7 D4	Light Green
A11 A1 B1 B5 C1 D1 D9 A8 B4	Dark Green
A11_A4_B1_B5_C1_D1_D9_B4	Bright Green
A12_A4_A11_B3_C2_D1_E1	Purple
A12_A6_A10_B4_C1_E5_B12_E6	Light Blue
A12_A6_A10_B4_C2_F5_R13	Orange
A24 A4 A20 B3 C1 D1 F1 F2 F4 F7 G4 C4	Pink
A24_A6_A13_B4_C1_B13_C5	Teal
B15_A3_A10	Grey
B15_A3_A13	Dark Grey
B15_A3_A8	Black
B16_A6_B6	Yellow
B27_A1_B1_C1_A5	Dark Purple
B28_A1_B2_C1_A5	Blue
B28_A1_B3_A4_B5	Dark Blue
B28_A1_A1	Light Blue

# Results – Classifications

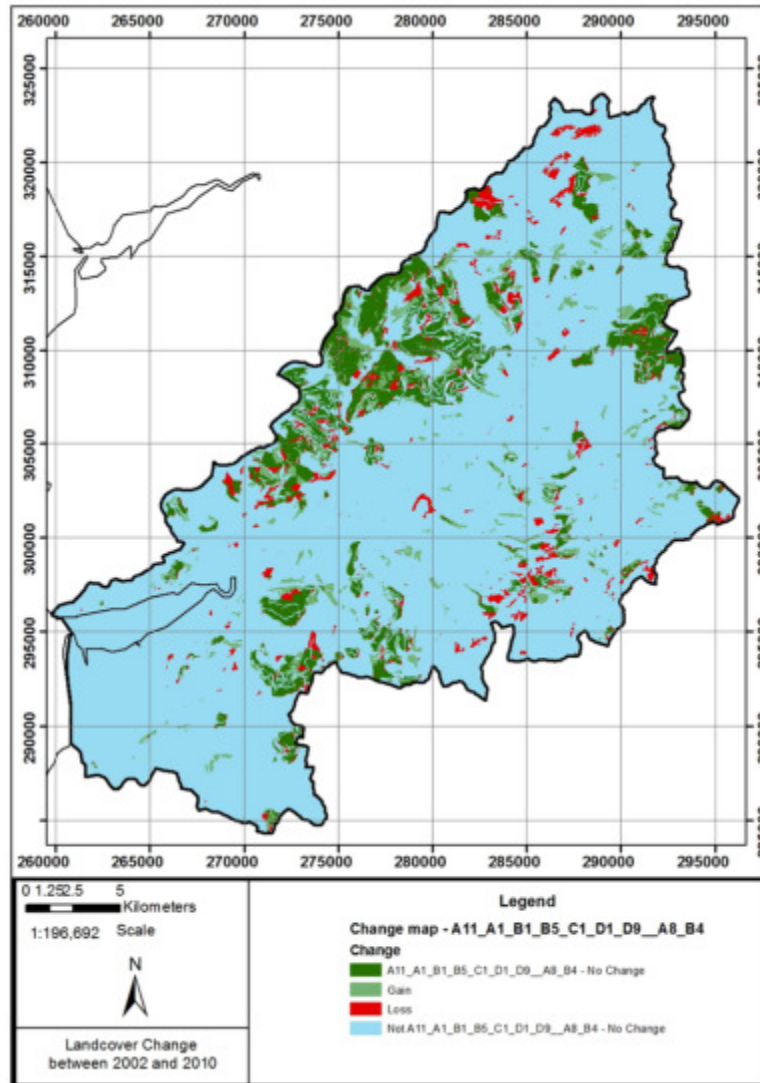


- Overall Accuracy 70%

**Legend**

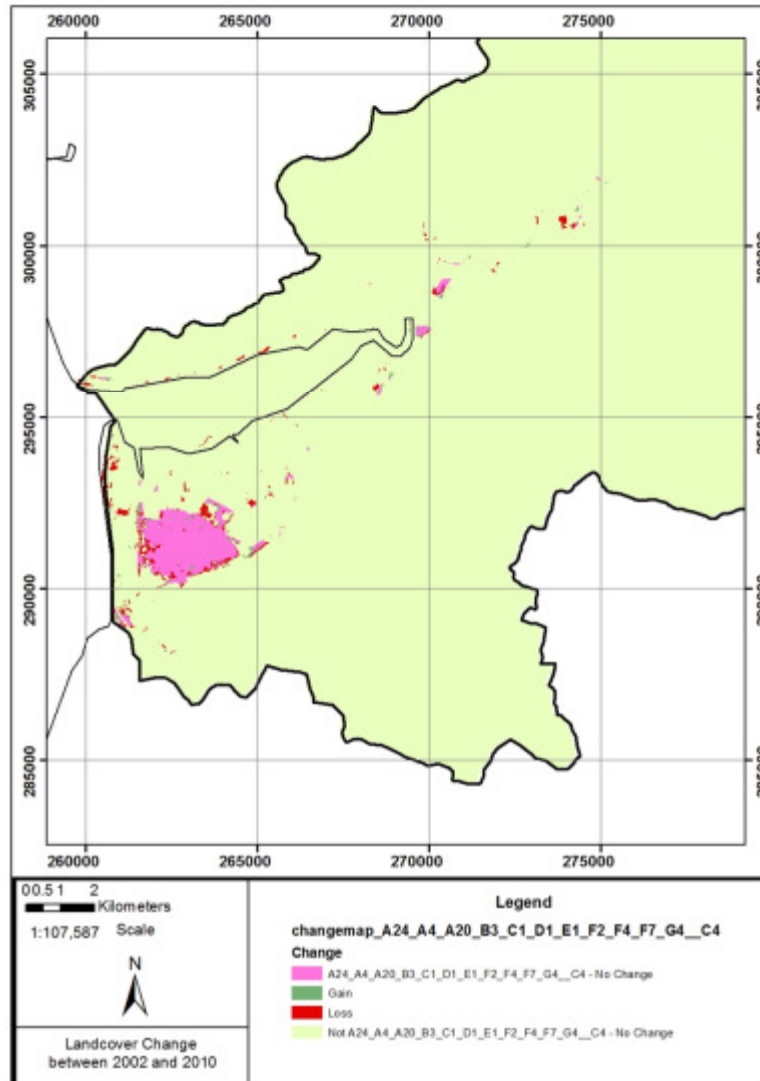
LCCS Lifeform Classification	
Class_name	
	A11_A1_D1_D5_C1_D1_D9_A7_D4
	A11_A1_B1_B5_C1_D1_D9_A8_B4
	A11_A4_B1_B5_C1_D1_D9_B4
	A12_A4_A11_B3_C2_D1_E1
	A12_A6_A10_B4_C1_E5_B12_E6
	A12_A6_A10_B4_C2_F5_R13
	A24_A4_A20_B3_C1_D1_F1_F2_F4_F7_G4_C4
	A24_A6_A13_B4_C1_B13_C5
	B15_A3_A10
	B15_A3_A13
	B15_A3_A8
	B16_A6_B6
	B27_A1_B1_C1_A5
	B28_A1_B2_C1_A5
	B28_A1_B3_A4_B5
	B28_A1_A1

# Results – Land cover change



- Class Accuracy 70% & 80%
- 18% Growth in Coniferous Plantations

# Results – Land cover change



- Class Accuracy 90% & 90%
- 17% loss of high quality active bog
- Degradation of perimeter towards semi-natural grasslands



The use of remote sensing  
techniques to monitor landcover  

---

change, in the Dyfi Biosphere,  
using the Land Cover  
Classification System (LCCS).

**Thank you for listening.**

**Are there any questions?**