



THE ASSOCIATION  
FOR **GEOGRAPHIC**  
**INFORMATION**

# YEAR IN REVIEW



20  
25

# About the AGI

The Association for Geographic Information (AGI) is the UK's geospatial membership organisation; leading, connecting and developing a community of members who use and benefit from geographic information.

An independent and impartial organisation representing the UK geospatial sector, the AGI works with members and the wider community, to deliver the highest quality of education and provide a lead for best practice across the industry.

***Our mission is to nurture, create and support a thriving UK Geospatial Community, actively supporting a sustainable future and we aim to achieve this through the three pillars that govern our activities and intentions;***

- nurture and connect active GI communities,
- support career and skills development for GI professionals,
- provide thought leadership to inspire future generations.

Established in 1989, members of the AGI enjoy unrivalled networking opportunities, a framework to learn new skills and the support to progress professional development. There are many ways to get involved and different levels of engagement;

- **Individual Network Member;** free membership for anyone,
- **Individual Professional Member;** paid membership for individuals providing additional career, networking and business development benefits,
- **Organisational Associate Member;** membership for organisations that includes professional membership for all employees and promotional benefits,
- **Organisational Partner Member;** premium membership for organisations that includes thought leadership, professional membership, promotions, sponsorship and additional benefits.



## AGI National Groups

Our national groups present opportunities for members to connect with others in their location and offer annual programmes of events and activities.

AGI Cymru, AGI Northern Ireland, and AGI Scotland, representing the interests of our Welsh, Northern Ireland and Scottish Communities, all bring together like-minded individuals and organisations for discussion, networking and support.

## AGI Networks

Within the structure of the AGI we currently have seven network groups; Early Careers Network, the Educations and Skills Network, Housing Network, Earth Observation Network, 3D Network, Greater Manchester Network and Gemini.

These networks provide an opportunity for members to come together to share experiences, offer support, guidance and networking opportunities.

# Our AGI Co-Chairs

2025 was a monumental year for the AGI in more ways than one with landmark events, headline publications, and lasting achievements. Co-Chairs Fergus Craig and Peter ter Haar reflect on the year past and look forward to 2026:



## Fergus Craig

In November we officially launched Foresight 2030. Whilst for many this was the culmination of months of hard work bringing the report, and the Foresight Conference, to fruition, we hope that this is just the start of the conversation around the opportunities and challenges we face over the next five years.

Of course, 2025 wasn't just about the Foresight project, we held our annual awards at GEO Business in June, and our national groups hosted three important conferences. We launched three new networks (AGI Housing Network, AGI 3D Network, and AGI Greater Manchester Network), and held eight network meetings in addition to webinars and social events.

I know that plans are already well underway for 2026, with dates set for AGI Scotland Annual Conference in February, the Annual Awards at GEO Business in June, and of course GeoCom 2026, which is due to take place on 12<sup>th</sup> November 2026. AGI Northern Ireland and AGI Cymru Conferences will take place as usual in June and October respectively.

We are also working hard to launch more networks, potentially focusing on Government, Nuclear, and the South East of England.

So, before I hand over to Peter, I would just like to urge all members to get involved not just by attending events but by contributing to them in terms of content or support on the day.

I would also urge members to build on the work of the networks and the Foresight to ensure we have regular and relevant geospatial conversations.



## Peter ter Haar

In 2025, we welcomed eight new organisational members, without whose support the work of the AGI would not be possible, and we cemented our relationships with affiliated organisations and other membership organisations working on the Foresight project and other joint activities. So, my first set of thanks goes to those partners who support the AGI and who we hope we in turn support through our governing pillars.

My second set of thanks goes to all the members that help us deliver the activities and intentions of these pillars. Specifically, those who give freely of their time contributing to both the national and network groups. I would also like to specifically thank the members of Council to whom we are sadly saying goodbye to in 2025 namely; Denise McKenzie, Alan Moore, Adam Burke, James Wardroper, Esther Ogbu, Sam Tizzard, and Sara Stewart.

As mentioned in the recent AGM, I would also like to announce my intention of stepping down as Co-Chair in 2026 and pass on my personal thanks all that have supported me as I did my best to deliver on this role.

This just leaves me with the pleasure of welcoming our new Council members; Christine Armour, Marcus Humphrey, Annie Ankers, Vickie White and Mick Dunn, and on behalf of the entire AGI team, wish you all a happy, healthy, and prosperous 2026, I hope it is filled with all things geo.



# Meet the 2025 team



**Ben Blowers, Sustainability**  
GIS Lead  
Lucion Environmental Advisory



**Adam Burke, Past Chair**  
Associate Head of Geospatial Services  
NHS South, Central & West CSU



**Andrew Cameron, Membership Co-Lead**  
GIS Director  
The Crown Estate



**Bob Chell, Early Careers Network**  
Chief Product Officer  
1Spatial



**Kenna Dallaway, Vice Chair**  
Strategic Product Manager  
Ordnance Survey



**Richard Flemmings, Foresight Project Lead**  
Partner and CEO  
Map Impact



**Tamsin Fulton, AGI Events Co-Lead**  
Business Development Manager  
GeoPlace LLP



**Ian Maxfield, Deputy Vice Chair**  
Associate Director of Geographic Services,  
NHS South Central & West CSU



**Denise McKenzie, International Partnerships**  
Managing Partner  
PLACE



**Alan Moore, Treasurer**  
Head of Geospatial Services  
Idox PLC



**Simon Nigh AGI Events Co-Lead**  
Head of Geospatial  
Carter Jonas



**Esther Ogbu, AGI Communications**  
Project Manager  
Esri UK



**Patrick Rickles, Education and Skills Lead**  
Head of Digital Skills and Innovation  
North Sea Transition Authority



**Liz Scott, Earth Observation Network**  
Geospatial Solutions Architect  
Satellite Applications Catapult



**John Seabourn, AGI IT and Software**  
Chief Digital & Information Officer  
APEM Group



**Dr Sara Stewart, CPD Lead**  
Senior Business Development Manager  
OSNI



**Mark Stileman, Hon. Secretary**  
Senior Product Manager  
Ordnance Survey



**Sam Tizzard, AGI IT and Software**  
GIS & Data Manager  
London Borough of Harrow



**Stuart Tosney, Membership Co-Lead**  
Head of Geospatial and Site Engineering  
Vision Survey Ltd



**James Wardroper, AGI Cymru**  
GI Consultant  
Ordnance Survey



**Vida Williams, AGI Communications Lead**  
Technical Director  
Jacobs



# AGI Awards for Geospatial Excellence

For the second year we were once again grateful to GEO Business for hosting the presentation of the AGI Awards for Geospatial Excellence. In front of an excited audience, with support from Council, Partner Members, and previous award winners, we recognised just some of the innovation, achievements, and best practice that takes place every single day across the geospatial sector:



## **AGI Chairperson's Award for Outstanding Service to the Geospatial Community** *Ed Parsons, Digital geographer, Geospatial Technology Advisor, and Keynote Speaker*

Ed is our industry's ultimate educator and explorer. Over many years he has travelled the world with stories about geospatial. Always exploring new applications and locations, and always helping people to understand the opportunities and future of geo.

Presented by Fergus Craig and Peter ter Haar AGI Co-Chair's

## **Geospatial Professional of the Year Award** *David Hinton, Senior GIS Analyst at The Crown Estate*

This award recognised David's ability to inspire colleagues while delivering excellent spatial data and analytical expertise to support objectives such as catalysing the UK towards net zero, promoting nature recovery, and optimising value from the marine space.

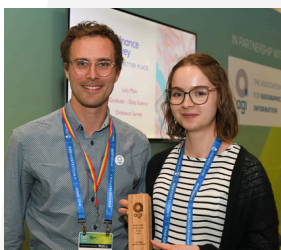
Presented by Liz Fox-Tucker, Professional & Policy Manager, Royal Geographical Society (with IBG)



## **Early Career Professional of the Year Award** *Lucy Main, Geospatial Data Graduate at Ordnance Survey*

In just 18 months Lucy has solved complex problems for government agencies, become the go-to expert on ML for geospatial data, led the integration of ML, AI and computer vision into cloud computing platforms, and co-led the OS LGBT+ network fostering a diverse and inclusive workplace.

Presented by Tom Perks Co-Chair, AGI Early Careers Network



## **AGI Award for Environment and Sustainability** *David Genney, Team Manger for Protected Areas, Innovation and Data*

Celebrating projects, applications, and products that contribute to the sustainability for coexistence, the winner uses satellite ecological and historical data to support the 30x30 biodiversity target; enhancing ecosystem resilience and enabling faster and smarter decision making.

Accepted by Daniel Rex and presented by Claire Williams, Product Manager, Esri UK



## **Award for Innovation in Geospatial Technology** *AI4Peat project lead Anne Williams*

Recognising ground breaking advancements in technology, whether that be through processes, software, hardware, data collection, or innovative applications for AI and Big Data, this award celebrates forward thinking solutions and the AI4Peat project epitomises these things.

Accepted by Samuel Richardson, Natural England and presented by Will Robertshaw, Geospatial and AI Engineer at Ramboll.



## **Award for Geospatial Collaboration and Partnership** *Stuart Miller, Geospatial Sector Lead at Fife College*

The nominated project was chosen by the judges for effectively addressing skills sources in the UK geospatial sector, reducing barriers to entry to market, and having potential for significant widespread impact.

Accepted by Tom Timms, Verisk and presented by Kenna Dallaway, AGI Vice Chair



## **2026 AGI Awards for Geospatial Excellence**

AGI 2026 Awards will open **Monday 26 January 2026** for submissions from individuals and organisations wanting to showcase innovation, achievements, and best practice.

Categories will include Geospatial Professional of the Year, Early Career Professional of the Year, the Award for Environment and Sustainability and the Award for Geospatial Technology and new for 2026 the Chris Holcroft and Foresight Awards.

[Read about the AGI Awards](#)

# AGI FORESIGHT PROJECT 2025

*"the geospatial sector isn't simply evolving, it's fundamentally reconstituting itself around six interconnected forces that challenge every assumption about geospatial intelligence in the 21<sup>st</sup> Century"*

In early 2025, the AGI announced an exciting project exploring the opportunities and challenges for the geospatial sector over the next five years.

Referencing previous Foresight Projects, the work started with a wide-reaching survey aimed at identifying the biggest themes, influences and developments, that will impact geospatial to 2030. This outreach activity was followed by a series of engagements at events such as the OS Innovation Festival in March, the GEO Business event in June, and various AGI networking events. Alongside these community involvement activities, we commissioned a series of one-to-one, in-depth interviews with nominated representatives both from within and beyond the traditional geo community.

The output from these was collated, by independent editors, into the Foresight 2030 report.



## The 2030 AGI Foresight Themes



**Data in the World of Geospatial: The Next Transformation**; the report predicts the biggest transformation in geospatial data since the advent of digital mapping. One which will extend beyond the technological capability to encompass fundamental questions of trust, community engagement, and professional authority.

**Artificial Intelligence in Geospatial: Promise, Peril and the Path Forward**; AI stands as perhaps the most consequential technological force reshaping the geospatial sector today. However, success requires moving beyond technological optimism to address fundamental challenges around skills, collaboration, data access, and ethical deployment.



**Interoperability and Infrastructure in Geospatial: Evolution over the Next Five Year**; currently at a critical juncture, where foundations underpinning spatial data exchange and system integration are changing, the geospatial community needs to seize the nettle by embracing standards and APIs, with a "make it work" attitude.

**The Great Skills Shift – How Geospatial Education must evolve for an Embedded Future**; Traditional education models are colliding with rapidly evolving industry demands and the question isn't whether geospatial will remain relevant, it's whether our education systems and professionals can adapt quickly enough to thrive.



**Collaboration in Geospatial: Evolution and Future Trajectories**; is the geospatial sector moving from traditional, competitive models to more collaborative frameworks that recognise the interconnected nature of geospatial challenges? The theme and desire are evident, but the reality is more piecemeal.

**Earth Systems Evolution: The Geospatial-Digital Twin Nexus Transforming Climate, Finance and Construction**; earth systems don't just inform decisions, they are instrumental in how we build, finance, and protect our future. However, the future does not lie in a single technology, but in the connections between them, the wisdom of deployment, and collaboration to address challenges.





# AGI FORESIGHT PROJECT 2025

With the benefit of hindsight, the report also reflected on how the geospatial industry has already developed, and issues identified in previous foresight projects, before addressing the “so what?” challenge with calls to action for major stakeholder groups in the geo ecosystem. These include; Government and Policy Makers to enable the infrastructure revolution, Industry delivering responsible innovation at scale, and Geospatial Membership Groups leading the professional evolution revolution.

***We are at an important inflexion point for our industry, and it is every leader's role to take these challenges seriously.***

***Without productive adaptation, the geospatial sector risks becoming infrastructure that others control, essential but invisible, powerful yet struggling to articulate its value.***

We would also like to encourage members of the AGI and the wider geocommunity to use the report in their day-to-day activities and conversations, to challenge the content, and to engage with the AGI to advocate for wider deployment of geography and geospatial.

To download your copy of the report and join the Foresight conversation, which is already gaining traction and volume within government, academia, and industry, visit [AGI Foresight Report](#). Alternatively make sure you follow us on [LinkedIn](#).

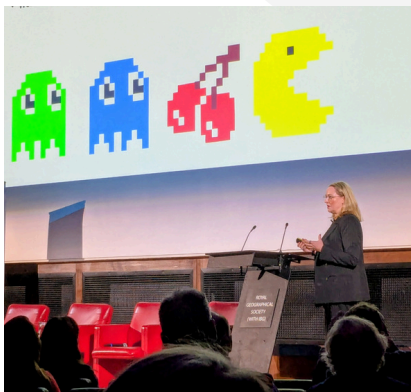
## AGI Foresight Conference 2025

The AGI Foresight Report 2030 was officially launched to an audience of more than 200 geospatial professionals at the AGI Foresight Conference 2025 at the Royal Geographical Society (with IBG) in London on the 13<sup>th</sup> November.

With keynote presentations from Ed Parsons, Geospatial Technology Advisor and Google's first ever Geospatial Technologist, and Denise McKenzie, Past Chair of the AGI and Managing Partner at the PLACE Trust, the agenda also featured representation from AtkinsRéalis, Idox Geospatial, and 1Spatial, together with an interactive presentation from the AGI Early Career Network.



The AGI would like to thank Cadcorp, CGI, Esri UK, GIS Jobs, Idox Geospatial, Informed Solutions, MGISS, Ordnance Survey, Ordnance Survey Northern Ireland, and Verisk for their sponsorship, which has made the Foresight project possible, and extend special thanks to the Royal Geographical Society (with IBG) for its backing.



## SAVE THE DATE GeoCom 2026

Join us Thursday 12 November GeoCom 2026 at the Royal Geographical Society (with IBG).

Bringing together the geocommunity with networking sessions, panel discussions, industry expert presentations and thought leadership addresses from some of the nation's biggest names in geospatial.



# AGI Cymru

## AGI Cymru

The highlight of the year for AGI Cymru was our annual GeoCymru conference, a flagship event that brings together the geospatial community in Wales to share knowledge, exchange ideas, and strengthen connections across a wide range of disciplines.

On Thursday 9 October, AGI Cymru welcomed the geospatial community from across Wales — and beyond — to GeoCymru 2025 at Sophia Gardens, Cardiff. The event focused on **“Geospatial Solutions for the Built Environment”**, bringing together experts from academia, government, and industry to share insights, innovations, and practical applications of location data in planning, infrastructure, and sustainability.



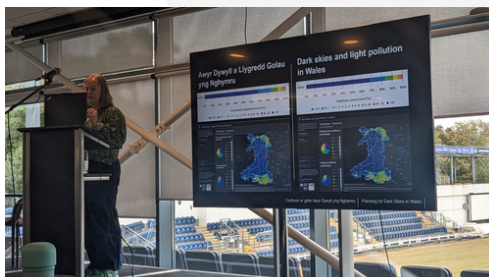
This year's event also marked ten years since the Well-being of Future Generations (Wales) Act, offering a timely opportunity to reflect on how geospatial thinking has supported more inclusive and forward-looking decision-making.

Although the geospatial community in Wales is relatively small, its greatest strength lies in the strong culture of collaboration, sharing both technical expertise and transferable skills. This approach reflects two of the six key themes highlighted in the Foresight Report: Collaboration and Skills.

The event featured keynote presentations from Professor Scott Orford of Cardiff University who talked about the Public Map Platform, a two-year research initiative, led by Cambridge University, that uses open mapping processes to enable communities to show what's important to them and have a voice in planning their places. This project is based on Ynys Môn / The Isle of Anglesey, and is part of the Future Observatory. Gayle Lister, of Pembrokeshire Coast National Park Authority, presented as a second keynote and looked at planning for the conservation and enhancement of dark skies in Wales.

Joining them Nicolas Kinsella of Ulster University explored how methane super-emitters are being tracked from space for a cleaner energy sector, Richard Flemmings of Map Impact, presented on climate risks in the built environment and Joe Hillard of the National Trust described his work with the HART (heritage and Archaeology Ranger Team) Programme.

We were also pleased to be joined by James Wardroper of Ordnance Survey revealing the work to date creating and implementing the National Underground Asset Register (NUAR), and Hannah Brooks of GeoPlace explored policy principles to support the effective use of address data.



## AGI Cymru looking forward to 2026

In 2026, AGI Cymru will focus on deepening collaboration and developing skills across Wales by growing our membership, hosting GeoCymru in October 2026.

Our commitment to inclusivity starts with contributing to an advisory group on geospatial tools for the upcoming Tirlun outdoor learning platform.



# AGI Northern Ireland

## 2025 A strong and impactful year for AGI Northern Ireland

2025 has been a strong and impactful year for AGI Northern Ireland, marked by high-quality professional events, growing engagement with students and early-career professionals, and continued momentum in supporting the geospatial sector across the region.

## AGI Northern Ireland celebrates a resounding success

Our June conference was again a highlight in the AGI Northern Ireland calendar focused on the theme of interoperability and collaboration.

The conference was our best attended yet, with over 175 registrations, bringing together professionals from local authorities, public sector, industry, and academia. Under the theme ***"Bridging the Divide: Advancing Geospatial Collaboration and Interoperability"*** the conference addressed the unique challenges and opportunities in Northern Ireland's geospatial landscape. With data inconsistencies and fragmentation across jurisdictions still a major concern, speakers and delegates explored practical ways to build bridges—technological, organisational, and professional—across both islands.



## Technical and Professional Webinars

In 2025, AGI Northern Ireland delivered two successful webinars:

The first focused on practical geospatial skills and emerging delivery approaches, providing value for both early-career professionals and experienced practitioners looking to broaden their technical knowledge.

Later in the year, we hosted a remote sensing webinar, which explored current applications and evolving techniques within Earth observation and spatial analysis.

## Student and University Outreach

Supporting the next generation of geospatial professionals remained a key priority in 2025. AGI Northern Ireland attended the careers fair at Ulster University, engaging directly with students to promote career pathways in geospatial and the benefits of AGI membership.

We also strengthened our links with Queen's University Belfast, where our chair, Andrew Paul, delivered a presentation to students highlighting:

- The role of AGI in the geospatial profession
- The value of networking and CPD
- The benefits of student and early-career membership



## AGI Northern Ireland Social Event

The year concluded with a social event on 27 November at the Boneyard Belfast. It was a fitting way to close a busy year for our members.



## Looking ahead 2026

As we look towards 2026 we have already started planning our conference for June 2026. More details of this will be released soon and we will be continuing with our webinar series throughout 2026. We will also be kicking off the new year with a networking event in central Belfast.

Thank you to all our speakers, attendees, partners, volunteers and committee members who helped make 2025 such a successful year for AGI Northern Ireland.



# AGI Scotland

## AGI Scotland 2025 Highlights

A significant highlight was the launch in February of the first geospatial training course in the higher education sector by Fife College, a development promoted, nurtured and supported by AGI Scotland. This has been acknowledged as a recognised qualification on the Scottish Credit and Qualifications Framework. Thanks to all at Fife College, Ashley Stewart at Location Data Scotland, and Alan Corbett at the Scottish Government for their hard work in bringing this important initiative to fruition.

In the context of this work, AGI Scotland Chair Bruce Gittings met the Scottish Business Minister Richard Lochhead MSP to explain the importance of Geospatial and its potential as a growing sector of the economy.

Bruce Gittings and Ashley Stewart also spoke at the graduation of the Fife students in June.



## AGI Celebrates GeoCom 25 Success



GeoCom 2025 hosted by AGI Scotland  
*Opportunities in Geospatial Intelligence: Shaping a Smarter World*



GeoCom 2025 took place for the first time in Scotland on the 27 February.

Under the theme ***"Opportunities in Geospatial Intelligence: Shaping a Smarter World"*** it attracted more than 160 delegates and was supported by geospatial organisations from across the UK. Alongside a packed programme of presentations from thought leaders and innovators, GeoCom also featured a lunch-time session for students and early careers professionals, a panel discussion on AI, and the usual 'geo-drinks' and networking.

AGI Scotland was also strongly represented at the PGSA conference in Edinburgh in November and we hosted a range of seminars in our AGI-EEO series including: Caroline Nichol and Mareike Feldmann (University of Edinburgh) talking about new approaches for mapping and managing invasive plants, Genevieve Patenaude (Earth Blox) reflecting on their journey as an innovative EO start-up, Doug McNeil (EOLAS) gazing into the future, and Colin Morrison on broadband roll-out in Scotland.

We had a collaboration with Geomob in March and, as at writing, we have one further seminar on the 3rd December from Will Cadell of Sparkgeo.

Our thanks to Dr. Iain Cameron for organising these events.

## AGI Scotland plans for 2026

Looking ahead for 2026, planning is well advanced for our annual conference on 24th February in Glasgow on the theme of ***"Our Land Matters Unlocking landscape potential through geospatial innovation"***

Bringing together practitioners, policymakers, researchers, and industry leaders, AGI Scotland 2026 will explore how geospatial data, tools and insight can help Scotland make better land and place-based decisions supporting sustainable growth, climate resilience, and inclusive communities.

Attendees can expect a full day of thought-provoking talks, case studies and panel discussions, alongside opportunities to network with peers from the wider geospatial community. As usual, informal networking and socialisation will also occur after conclusion of the event.

We are also looking at evening events, and a careers event in junction with the Early Careers Network (ECN). We also have a new ECN representative on our Committee - Anna Hill, Geospatial Technician at EDINA.

Lastly, the Committee would also like to record our thanks to the entire AGI Scotland team and to administrative support from AGI itself with a special shout out to Cheryl for the support she gives us. We would also record our thanks to David Green who has stepped down from the AGI Scotland group on his retirement from the University of Aberdeen.





# AGI 3D Network

## AGI 3D Network

The launch of the AGI 3D Network marks a significant step in accelerating the UK's rapidly evolving 3D geospatial landscape. With 3D data transforming urban planning, infrastructure, environmental management, digital twins, and public engagement, the network aims to unite professionals across sectors to shape a coherent national approach to 3D geospatial.

The mission was clear: define essential data models, explore cross-sector use cases, demonstrate business value, influence a national 3D data strategy, and build a vibrant community for knowledge exchange. For anyone working with 3D geospatial data, the 3D Network offers a platform to amplify impact.



3D  
NETWORK

## AGI 3D Network Members



**Chair - Mick Dunn**  
Nottingham City Council



**Fergus Craig**  
NV5 / AGI Co-Chair



**Ralph Coleman**  
Bluesky International



**Steve Croney**  
Esri UK



**Chris Heap**  
Ordnance Survey



**Sam Tizzard**  
London Borough of Harrow

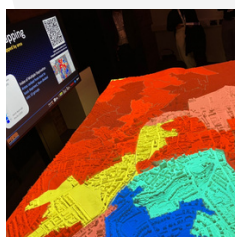
## AGI 3D Network: Taking Geospatial to Another Dimension

This vision came to life at the inaugural AGI 3D Network event, held in November at the University of Nottingham (city as Lab). The day opened with a scene-setting session outlining the network's objectives, followed by Planning in Focus, where MHCLG and Local Planning Authorities such as Bradford and Cambridge showcased how PropTech Innovation funding is modernising planning services through more transparent and effective approaches utilising 3D.

Attendees then explored hands-on demonstrations led by Bradford, Liverpool, and Nottingham Universities, ranging from 3D physical models and projection mapping, to immersive VR and rapid drone-based reality capture. Sector-led presentations highlighted real-world applications, including Germany's national 3D strategy and cutting-edge work such as Nottingham's digital twin.



AGI 3D Network Event  
Taking Geospatial to another Dimension  
Wednesday 12 November 2025



Workshops led by Dr. Paul Cureton generated lively debate on the future of 3D geospatial. Attendees described the event as “an environment of discovery,” with “a great buzz” and a “diverse, passionate audience.” Brainstorming sessions prompted pragmatic discussions on data collection, the value of physical models, and the long-term ambition of cost-effective national 3D data provision.

Feedback also reflected the diverse use cases and national value of 3D geospatial. Delegates left inspired by the innovation on display and united in the belief that 3D data is now an essential component of the national geospatial landscape.

## Plans for 2026

As the 3D Network continues to evolve, our priorities for the coming year focus on strengthening the community and developing activities that advance our core objectives:

- Enabling networking and knowledge exchange,
- Defining key 3D geospatial data models,
- Exploring real-world use cases across public, private, and academic sectors,
- Demonstrating business value and return on investment,
- Building the case for a national 3D data strategy.

We will draw on insights from ongoing engagement opportunities, as well as input gathered through recent Strategic Roadmap and Journey Mapping sessions, to guide the network's development and shape the next steps. We welcome ideas and contributions from the wider community.

[Read about AGI 3D Network](#)

# AGI Early Careers Network

## Early Careers Network a Round up of 2025

### April: "What can Geospatial Organisations offer you?" a live webinar

Our first event of the year was our "What can Geospatial Organisations offer you?" webinar, chaired by Will Jones and organised by Jon Allsup. The webinar highlighted the wealth of resources, support and opportunities available to early career professionals from membership organisations: Association for Geographic Information, British Cartographic Society and the Royal Geographical Society (with IBG).

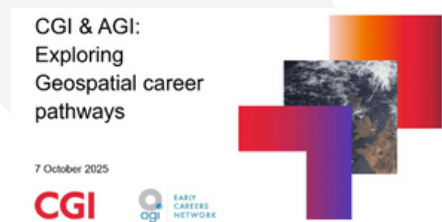


### June: AGI awards at GEO Business

Co-Chair Tom Perks attended GEO Business and handed out the award for the AGI 'Early Career Professional of the Year' to Lucy Main, Associate Data Scientist at Ordnance Survey. ECN committee members judging the award commended on the impact of Lucy's work, including solving complex data science problems for multiple government agencies, as well as leading the integration of machine learning, AI and computer vision into cloud computing platforms. *Congratulations Lucy!*

### October: CGI & AGI: Exploring Geospatial Career Pathways Webinar

In a collaboration with CGI, a panel of former and current CGI graduates shared their personal stories, challenges and successes from their early career journeys during a lunchtime webinar. It was an insightful session chaired by Doug Leno, with a range of great questions from the audience including key transferable skills, approaches to data security and the use of AI.



### October: Networking Event at Ordnance Survey HQ, Southampton

We hosted an in-person early careers networking event at the Ordnance Survey HQ in Southampton. It was a fantastic opportunity for early career professionals to meet in an informal setting and other highlights included a guided tour of OS artefacts and Geo-Bingo! Thanks to ECN volunteer Jamie Heath for organising this event.

### November: "Spotlight on the Rising Stars of Geospatial" Webinar

We collaborated with the Government Geography Profession (GGP) to showcase the rising stars in the geospatial sector. Chaired by ECN Co-chair Cerys Butterill, it was fantastic to hear from the winners of the GGP Rising Star Award (Tyde D'Souza, Jasmine Elliott and Gabriella Fasoli) and the AGI Early Career Award Winner (Lucy Main) as they shared their standout projects and career journeys. A diverse range of projects was presented – from detecting seals with AI to R-tree indexing for machine learning – and there was great engagement from the audience during the live Q&A!



### November: Panel Discussion at the AGI Foresight Report 2030 Conference

ECN committee members Kirsty Thomson, Will Jones, Jamie Heath, and Tom Perks gave their take on the future of geospatial during a panel discussion expertly chaired by AGI Council member Bob Chell.

A range of topics mentioned in the AGI Foresight report 2030 were debated, including the awareness and appreciation of geospatial, the impact of AI on ways of working and the evolving skills landscape.

## Early Careers Network 2026

Heading into 2026, ECN is building on a highly successful 2025 with more exciting plans in development including hosting more in-person networking events around the UK following the success of their recent event at the Ordnance Survey HQ in Southampton. They are also planning on hosting a mini-series of webinars focused on GIS software, doing more outreach with schools, and attending other industry events such as GEO Business and AGI networking events.



# AGI Earth Observation Network

## Bringing the worlds of geospatial and Earth Observation closer together

The AGI EO Network met twice during 2025 – with the aim to bring the worlds of geospatial and Earth Observation closer together, to help forge new relationships between what can often be two quite separate sectors, and share stories to inspire each other with the work we are doing. We want to ensure attendees can join-in, whatever their experience level with EO – newcomers and those who haven't touched satellite data for many years are as welcome as specialists and seasoned practitioners.

At our January gathering at Geovation in London, we heard from our sponsors Pixxel Space on their planned hyperspectral data coverage followed by a range of speakers mostly in the sustainability sector.



We heard from Kita outlining their journey into using EO for carbon credits, ESRI UK showcasing imagery capability in ArcGIS, landscape change mapping from Natural England, geospatial leadership training from ConsultingWhere, natural capital and ecosystem assessments from DEFRA, thermal monitoring from Satvu, energy monitoring from Local Energy Systems, and algal bloom detection from Map Impact, an introduction to the EO Datahub, culminating with an audience discussion which flowed into networking with geodrinks.



For our September meeting we headed more into the EO side at Space Park Leicester where we had an in-depth introduction to the EO Datahub from National Centre for Earth Observation. This was followed by the showcasing of multiple exciting uses of EO data for mine monitoring from SRK Exploration, quantifying tree cover loss from GreenOrbit Digital, assessing the value of EO with ConsultingWhere, using EO to understand informal urban expansion from Satellite Applications Catapult, and developing high resolution land surface temperature datasets from University of Leicester.

We would like to thank both Geovation and Space Park Leicester for hosting our events

*Fergus Craig, Richard Flemmings, Jason Hopkins and Liz Scott*



## AGI Earth Observation Network 2026

We encourage future speakers to pitch a problem to the audience and see what insights, as well as new connections, might come back!

Looking forward to seeing you at the next EO Network on Tuesday 10 February 2026 at SatVu, in London



# AGI Education & Skills Network

## Education & Skills Network Round up

This year was one of transition for the AGI Education and Skills Working Group as Patrick Rickles, Head of Digital Innovation at the North Sea Transition Authority, assumed the role of Director for Education and Skills, succeeding Ian Maxfield.

Alongside this leadership change, the group welcomed new and existing members who together have brought fresh perspectives and expertise.



## Sharpening the Group Mission

The year began with a comprehensive review and rewrite of the Terms of Reference, sharpening the group's mission to focus on supporting education and skills development for geospatial professionals seeking reskilling and upskilling opportunities.

Recognising the resource intensity of a full skills survey, the group opted against conducting one this year. Instead, efforts concentrated on consolidating research from previous surveys and related resources, identifying 15 key areas of interest impacting the sector.



## Action Plan for GeoSkills

To ensure alignment with community priorities, a spot survey was launched, including distribution at GEO Business, where Patrick's map-themed shirt and light-up hat sparked engagement.

The survey hoped to gauge opinion on which topics and opportunities are important to the geospatial sector. Options include, but are not limited to, Cloud-Based GIS and Big Data, Remote Sensing and Earth Observation, Geospatial AI, together with Ethical and Legal Aspects of Geospatial Data, Interdisciplinary Collaboration and Communication and Geospatial Leadership and Strategic Thinking.

Feedback revealed strong interest in themes consistent with the AGI Foresight Report 2030, particularly GeoAI, interdisciplinary collaboration, and the development of relevant skills to meet evolving industry demands.

This targeted approach has positioned the Working Group to deliver actionable insights and resources that reflect the needs of both AGI members and the broader geospatial education community.

## Plans for 2026

Looking ahead, the group will continue to champion innovation and collaboration, ensuring the workforce remains equipped for the challenges and opportunities of a rapidly changing geospatial landscape.



EDUCATION &  
SKILLS

# AGI Housing Network

## AGI Housing Network: A Successful Launch

AGI Housing Network is the first new AGI network designed to build on the insightful conversations and outcomes of the AGI GeoCom 2024 Housing Roundtable.

This new network is established to continue this vital dialogue and bring the housing community together to understand and improve the use of Geographic Information across this important sector.

The network will further explore key themes and questions posed during the roundtable, focusing on:

- Deepening understanding of geospatial technology and how well it is understood within the wider housing sector,
- Identifying what the geospatial sector can bring to the housing community,
- Understanding how a place-based approach can support the current and ongoing needs of the housing sector, and how this can help to improve quality of life for residents,
- Strategies to break down data and knowledge silos and the crucial role of technology in operations within housing,
- Ensuring that people remain at the heart of everything we do in the housing sector.

The network aims to foster continued connections and conversations, helping to “connect the dots and articulate the opportunities and challenges of geo within the housing sector”. This is your chance to engage with a diverse group of stakeholders and contribute to shaping the future of geospatial technology in housing.



HOUSING  
NETWORK



## AGI Housing Roundtable Report

The AGI published a new report aimed at unlocking opportunities for geographic technology within the housing community.

Key outcomes of the discussions are detailed in the report 'Housing and Geospatial; A Crisis or Opportunity', and include a commitment to building better communications between geospatial and housing sectors, and to share more relatable stories highlighting the benefits and potential for geospatial to support the housing community.

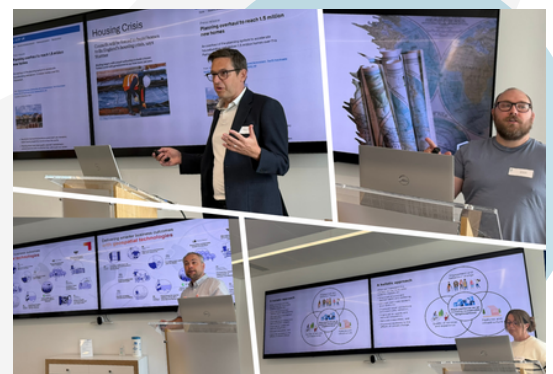
[Read the Housing Report](#)

## Place-Based Approaches: Meeting Housing Needs and Enhancing Quality of Life

In July 2025, the AGI Housing Network held its highly successful inaugural event focused on ***“Place-Based Approaches: Meeting Housing Needs and Enhancing Quality of Life”***, drawing together passionate professionals determined to shape the future of housing through geospatial insight.

Held at the impressive RICS Event Space in Birmingham, the gathering convened housing professionals and GIS Practitioners fostering knowledge exchange on geospatial applications in asset management, planning, and developing the strategy for reaching government targets of 1.5m new homes.

The event established strong momentum, demonstrating the sector's appetite for geospatial innovation and building a committed practitioner network and was made possible by the sponsors and support from RICS, CGI and Idox Geospatial.



## Shaping the Housing Network in 2026

A core team is shaping the network's 2026 purpose and strategy, targeting both geospatial and non-geospatial professionals. The aim is to show the value of geospatial tools, demonstrate the ROI in location technologies, and grow wider support for their use in housing sector for planning, operations, and innovation. The plan is to align with AGI foresight report themes to enable parallel discussions across networks.

[Read about the AGI Housing Network](#)

# AGI Greater Manchester Network

## AGI Greater Manchester Network completes a successful inaugural year

Dedicated to supporting and connecting professionals, organisations, and individuals working with geographic information (GI) within Greater Manchester and surrounding areas the AGI Greater Manchester Network was launched in 2025.

The network promotes the use and understanding of geospatial data and technologies by sharing knowledge of current GIS applications, emerging trends, and new or forthcoming innovations in GI, and brings together members from the public, private, academic, and third sectors to explore the value of location-based insight in addressing real-world challenges and driving innovation in the region.



GREATER  
MANCHESTER  
NETWORK



The AGI Greater Manchester Network has completed a successful inaugural year, establishing a regular, well attended programme of events that support and connect professionals, organisations and individuals working with geographic information across Greater Manchester and the surrounding areas.

This year the network hosted three networking events that showcased applied work in GIS. We were delighted to launch the first event in March, which explored the **"Future of 3D in Geospatial"** and highlighted advances in 3D urban digital twins, GeoBIM for engineering projects, and the National Digital Twin Programme.



In July the focus shifted to underground assets, with updates on progress on the **"National Underground Asset Register"**, spatial enhancements to utility networks, and the geospatial work of the Mining Remediation Authority. In October we examined the **"Use of GIS and GI in Nature Restoration"**, including strategies to protect, restore and create habitats, GIS standards for biodiversity net gain assessments, methods for underpinning restoration projects with geospatial data, and a series of short lightning pitches showcasing practical applications.

A defining feature of the network has been its sociable post-event gatherings. Drinks and informal networking drew strong attendance and provided a relaxed setting for follow-on discussion. These exchanges helped bring people and ideas together, turning event conversations into new contacts and collaborative approaches that attendees can apply within their own organisations.

The inaugural year has been about more than scheduling events: it has created a dependable, recurring space for knowledge exchange and relationship building across Greater Manchester and beyond. Hosts and sponsors have played a crucial role in keeping sessions accessible and welcoming, and attendees' engagement has laid the groundwork for an ongoing series of meet-ups the community can rely on.

## 2026 - BUILDING ON A STRONG START

Building on a strong start, the AGI Greater Manchester Network will continue to run events in 2026 that combine practical insight and networking opportunities, with an event planned every few months on topics shaped by prior conversations.

Organisations and individuals interested in presenting, hosting or sponsoring future events are invited to get in touch to help shape the programme as it moves into its next year; please keep an eye out for details of the next meeting.



# Our Members

## OUR AGI PARTNERS

The work of the AGI, as outlined in this report, would not be possible without the valuable support provided by our Partner and Associate Members. We would therefore like to extend special thanks to Esri UK, Land and Property Services, Ordnance Survey and Leica Geosystems.

These organisations offer additional support, above and beyond the terms of membership, including staff to support in person events, marketing resources, and strategic insight helping us shape the future while supporting our ability to nurture the next generation of geospatial professionals.



esri UK



HEXAGON



Ordnance Survey

## OUR AGI ASSOCIATE MEMBERS

During 2025 we also welcomed a number of new Associate Members, bringing the total number of organisations we support with a range of benefits to more than sixty.

Through their expertise, time and resources, alongside any financial contributions, our members play a vital part in ensuring we deliver our roles and achieve our mission.

1Spatial Group Ltd	GeoPlace LLP	Northern Ireland Water
Amentum	GIS Cloud	NV5 Geospatial Software
Arkance UK	GIS Jobs	Ramboll
Artificial Intelligence Digital Solutions Ltd	Historic Environment Scotland	RB Geomatics Ltd
Astun Technology Ltd	Idox Geospatial	Registers of Scotland
AtkinsRéalis UK Limited	Informed Solutions	Satellite Applications Catapult
Bluesky World Limited	Landmark	SEPA
British Geological Survey	Land Registry	Scottish Forestry
Cadcorp	London Borough of Harrow	Scottish Natural Heritage
Carter Jonas	Lucion Group	Spyro-Soft
CDR Group	MGISS	Tensing
CGI	Mallon Technology	Tetra Tech
City of London Corporation	MapAction	The Crown Estate London
City Science	Map Impact	The Scottish Government
ConsultingWhere	Mining Remediation Authority	Transport for London
Crown Estate Scotland	Natural England	Ulster University
Defra	Natural Resources Wales	University of Southampton Geodata
DAERA NI	Neath Port Talbot County Borough	Institute
EDINA, University of Edinburgh	Council	Verisk
Europa Technologies Ltd	NHS South, SCW	Welsh Government
Final Draft Mapping	North Sea Transition Authority	Woodland Trust
Forestry Commission	Northern Ireland Electricity Network	York St John University

Associate and Partner Members get more visibility through our website, and event presence. We are always keen to spotlight member expertise through blogs, talks, and panels. It's a great way to build credibility and show that your organisation is serious about supporting and advancing the profession.

You'll also be connecting directly with others in the sector - potential collaborators, clients, and partners - in a way that's much more meaningful than cold outreach.

For any business working in geospatial, it's a great investment in long-term reputation and connections.