

Asset Insight Revolution:

Optimising the Scottish Crown Estate
with OS National Geographic Database

Peter Green, GIS Technical Manager, CES

Magdalena Low, Managing Geospatial Consultant, OS

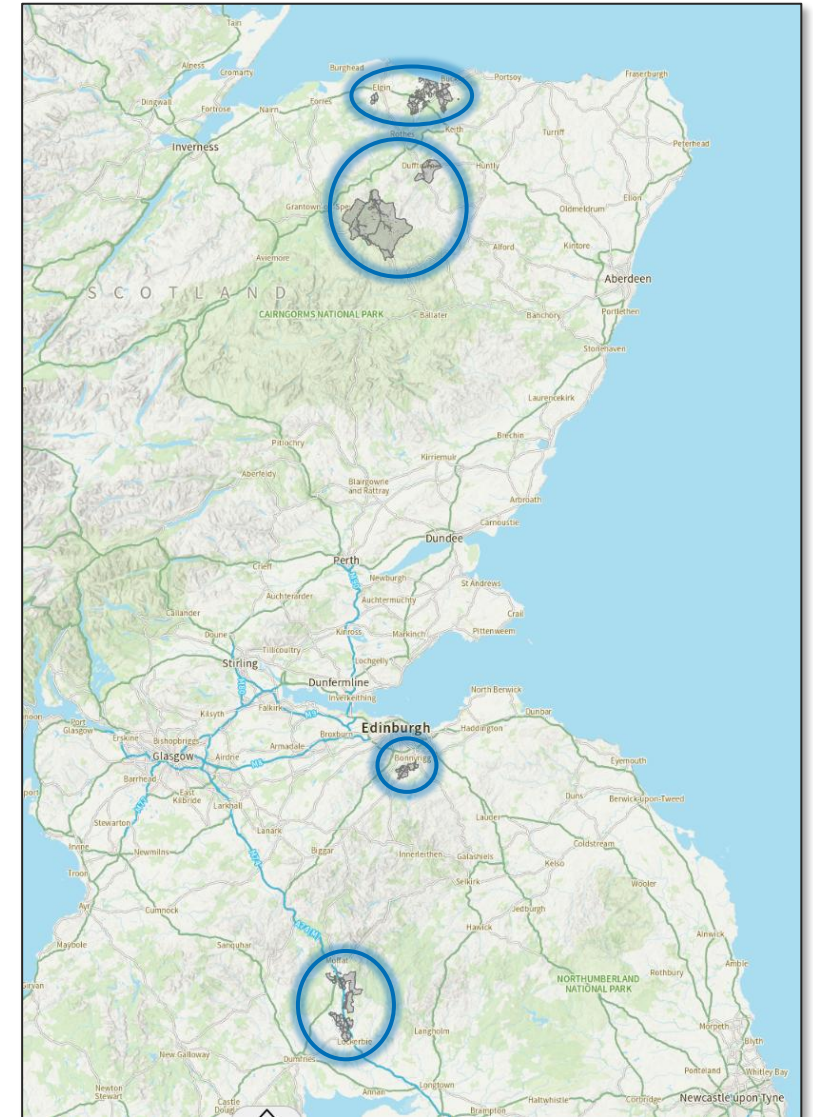
Crown Estate Scotland

- Self-financing public corporation of the Scottish Government
- Established in 2017
- The Scottish Crown Estate
 - Areas of land, foreshore and the marine environment
 - Built environment, natural resources and rights of the Crown
 - The rural estate



The Rural Estates

- Applegirth, Fochabers, Glenlivet, Whitehill
- 35,000 ha
- Range of activities
 - Farming, Forestry, Tourism, Mining
- Assets
 - 2000+ buildings/structures, 282 bridges, 779 culverts, 138 km of paths
 - 5000 ha of commercial forestry



Managing the Rural Estate

- Maintenance/Compliance
- Reporting/Performance
- The status quo
 - Ad-hoc, decentralised with lots of users and spreadsheets
 - Inaccurate, inconsistent and incomplete records
 - Definitions, schemas, domains
 - Workflows and procedures
 - Who owns the data?
- A new approach?



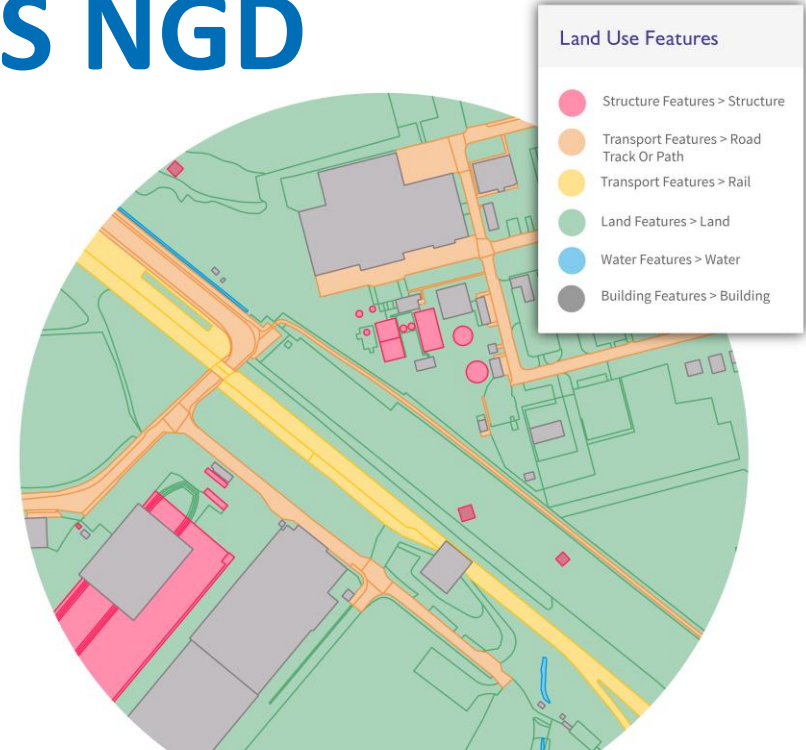
Mapping the Rural Estates

- Confidence through information
- Authoritative, single source of the truth
- GIS
 - Identify, develop and manage data
 - Asset management, inspection, compliance
 - Unlock information for users
- Where to begin?
 - Ordnance Survey's National Geographic Database (NGD)



Unlocking the value from OS NGD

- Maintained **location data** from an authoritative source
- **Interoperable** across variety of GIS
- Enables CES to select the **right asset types**
- **Enhances understanding** of asset location and key asset attributes
- Establishes a strong **foundation for asset inspections**
- **Improves confidence** in decision making around **long-term asset planning**
- Supports the **quantification of total cost** of asset management



“A data-driven and enabled business operation delivering effective and efficient operation...”

[Crown Estate Scotland 2026-31 Corporate Plan](#)

The NGD journey



- Define the problem



- Identify priority assets



- Provide behind the scenes insight

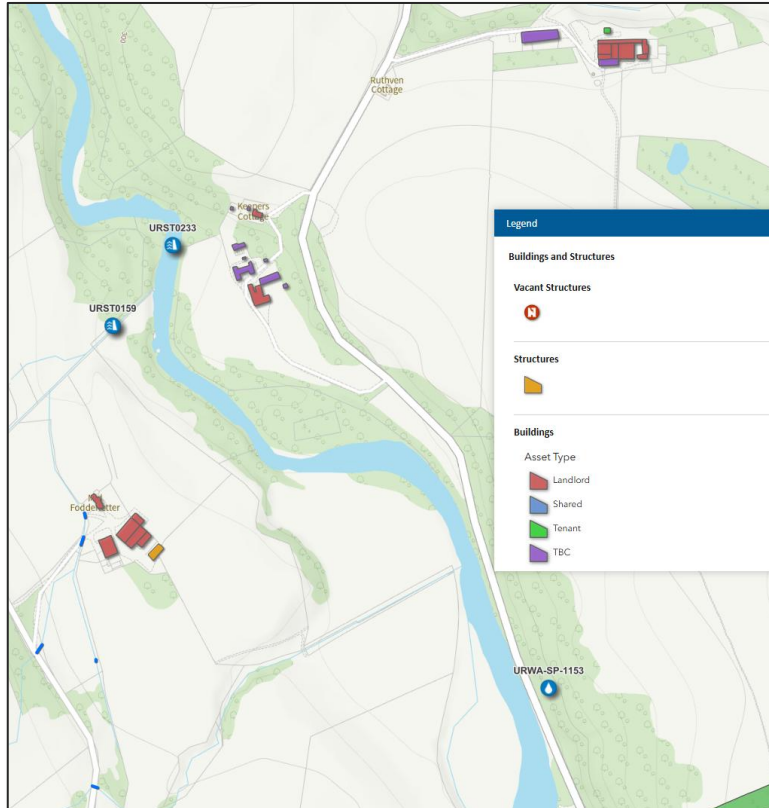


- Specify key benefits and limitations



- Help access and integrate

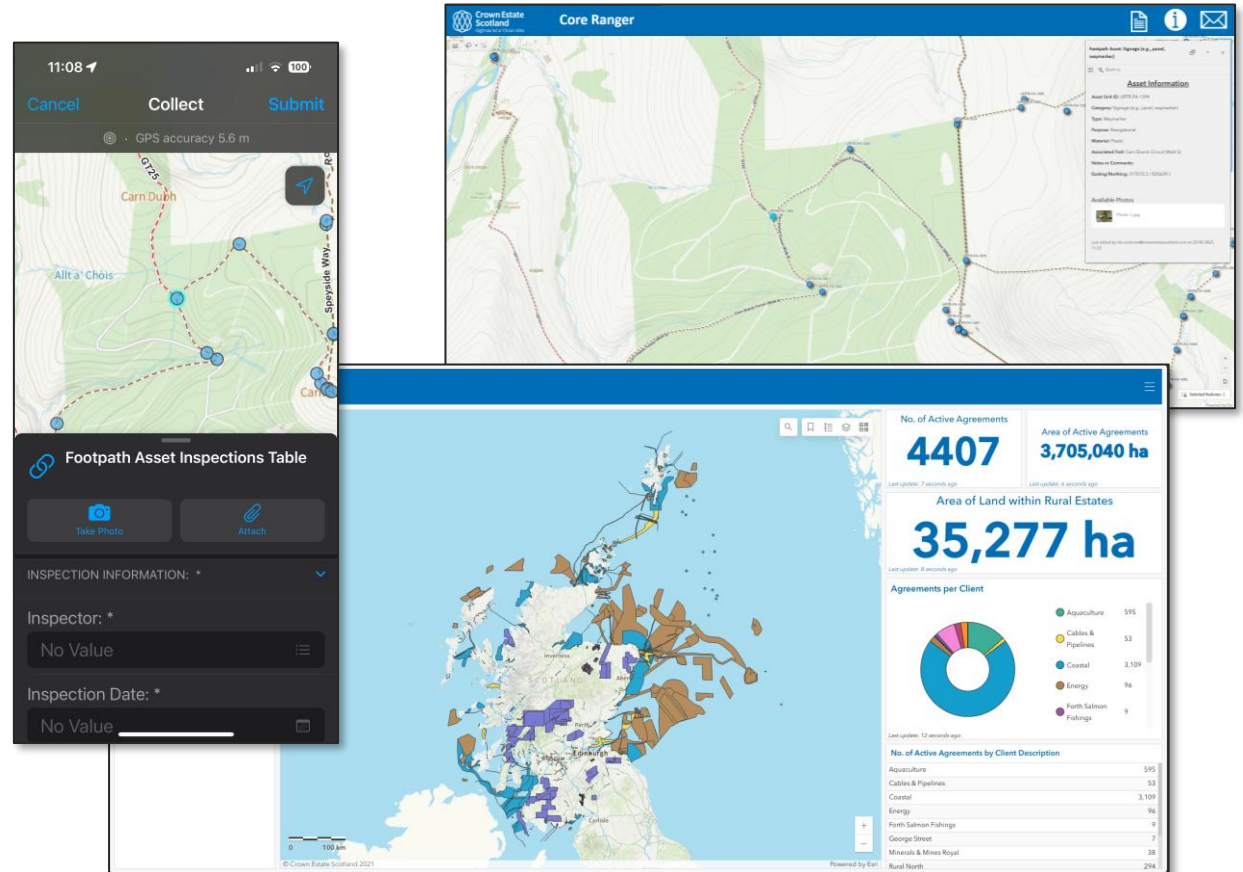
Building the New Asset Management System



- NGD as the foundation, enhanced with CES insight
- User centric approach to maximise value
- Asset records, definitions, schemas, domains
- Validation through observation
- Single source of truth
- System integration and use

Asset Data in Action

- Unlocking data
- Integration(s)
- Estate Management
 - 'Total Cost of Management'
- Inspections & Compliance
 - Mobile Mapping
- Accessible Information
 - Maps, Apps & Insights



What's next...

- Supporting Users
- System Integration
- Managing the Data
- Governance/Ownership



Thank you

Scan for our
Interactive Map

